



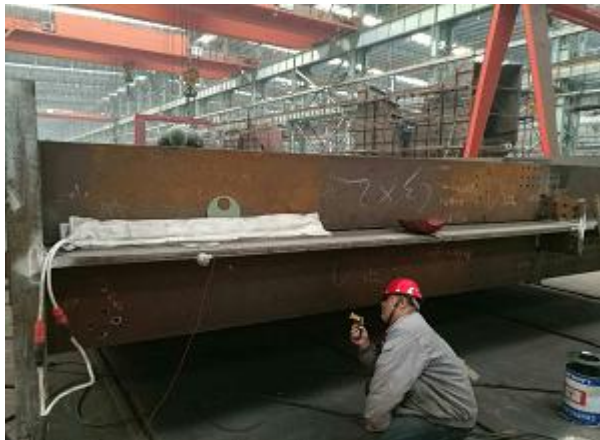
## MAIN APPLICATIONS OF MYD SERIES INDUCTION HEATERS

### 1. Weld preheat

Offshore Platform steel structure weld preheat



Platform steel structure weld preheat



Rack plate weld preheat &PWHT

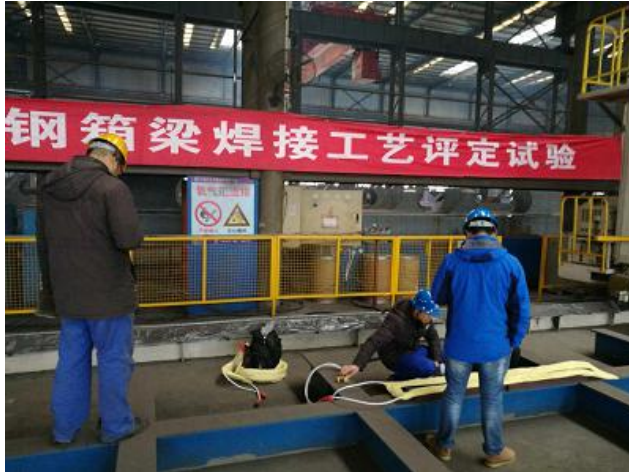


Railway Bridge steel structure weld preheat





### Bridge steel structure weld preheat



### Railway track welding preheating



### Ship board weld joint preheating





### Cutter head of shield machine weld joint heating



Pipeline heating before welding



Pipeline weld heating





## 2. PWHT-post weld heat treatment Steel sheet weld preheating&PWHT



Post weld heat treatment of electric power pipeline



Petroleum Pipeline PWHT





### Rack plate weld preheat &PWHT



Hydrogen and stress removing after welding of boiler



Press vessel weld preheat and PWHT



Pipe flange weld joint heat treatment





### Roll surfacing weld preheat and heat treatment



### Valve surfacing post weld heat treatment



### 3. Pipeline coating preheat Onshore pipeline coating heat





### Pipeline coating preheat



Offshore pipeline coating preheat



### 4. Assembly and disassembly preheat Turbine shaft assembly and disassembly preheat





### Generator rotor assembly and disassembly preheat



### Retaining ring removing heating



### 5. Reactor heating

#### Rubber oil refining reaction kettle heating





Qingdao Shuimu Induction Equipment Co.,Ltd Add: C-1805,Suning Plaza,Licang,Qingdao,China Tel: 86-532-89980348;  
E-mail: [service@cmheat.com](mailto:service@cmheat.com) Web: [Http://www.cmheat.com](http://www.cmheat.com); <http://cmheat.en.alibaba.com/> Fax: 86-532-84623448

## Oil and gas chemical reaction kettle heating-Explosion-proof chassis



### 6. Liquid heating

Industrial water heating and insulation - factory warm heating



### Reaction gas pipeline heating





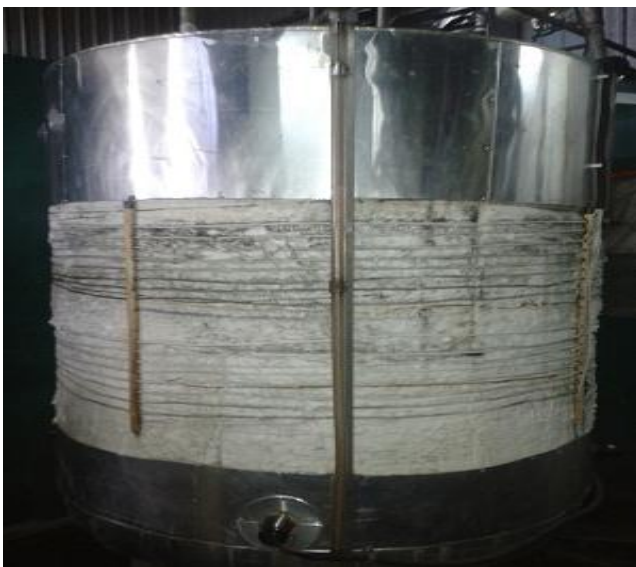
### Boiler pipeline material heating and insulation



### Industrial oil tank heating and heat preservation



### Drinking water heating and insulation in food processing company





## MYD series induction heater for weld preheat and post weld heat treatment(PWHT)

MYD-10, 20KW portable induction heater for weld preheat and PWHT with recorder connector



MYDS-20, 40KW portable induction heater for weld preheat





MYD-40, 60,80KW induction heater for weld preheat, PWHT with recorder connector



MYD-40, 60,80KW induction heater for weld preheat, PWHT with recorder built in





Differences between MYD Series and MYDS Series induction heater

Item	Power (KW)	PLC	Cooling type	Coil Cooling	Max Temperature	Power Size	Coil Length
MYD	≅ 360	10	Air cooling Water ≅ 100kw	Air for preheat Water for PWHT	900°C	10-360kw	10-50m
MYDS	≅ 360	4.3	Air cooling Water ≅ 100kw	Air	600°C	2.5-360kw	30-80m

Item	USB:	DSP	Recorder Connector	Heating curve Storage	Thermocouple Connector	Remote control	Coil Connector
MYD	√	√	√	√	√	√	√
MYDS	×	√	×	×	√	×	√

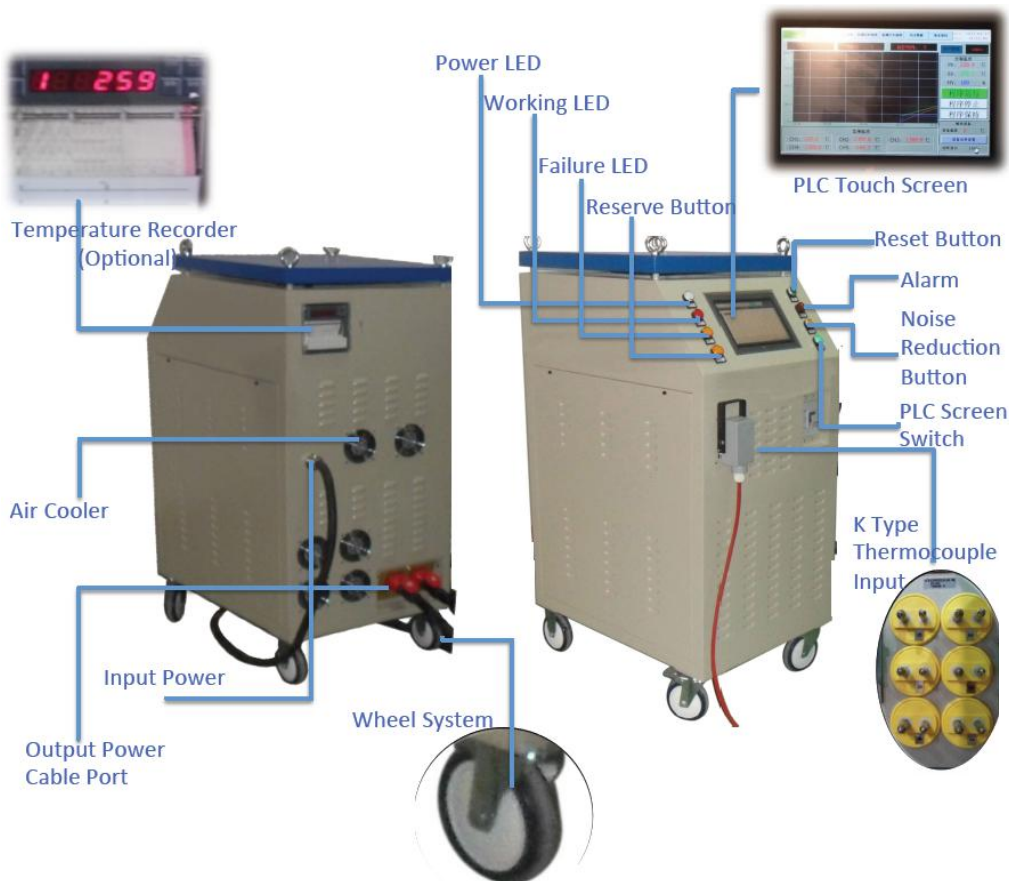
Main applications of MYD Series and MYDS Series induction heater

Item	Preheat	Weld heat	PWHT	Thermal Assembly	Reactor heating	Tank heating	Injection Mold heating	Water	Gas	Oil	Pipeline Liquid
MYD	√	√	√	√	√	√	√	√	√	√	√
MYDS	√	√	×	√	√	√	√	√	√	√	√

Difference between MYD induction heater and ceramic pad heating elements(Quick heating)

Item	Heat	Insulation	Heating elements	Heating lost	Speed	Efficiency	Uniformity
Induction	Direct	Inner	Less hot	Less	High	High	More
Ceramic	Transfer	Outer	Hot	More	Low	Low	Less

Induction heating is an uniform heating with high speed and efficiency.





### Induction Heating Speed Chart - Blanket Coil 10KW-1000\*200mm

Thickness (mm)	Joint length (m)	Width (mm)	Weight(kg)	Temperature (°C)	Power cost (kw·h)	Theoretical Time (min)	power consumption (kw·h)	Actual time (min)
10	1	200	15.6	100	0.2	1.2	≅0.3	1-2
20	1	200	31.2	100	0.4	2.4	≅0.6	3-4
30	1	200	46.8	100	0.6	3.6	≅1.2	4-7
40	1	200	62.4	100	0.8	4.8	≅1.6	6-10
50	1	200	78	100	1.0	6.0	≅2.5	8-15
60	1	200	93.6	100	1.2	7.2	≅3.3	12-20
70	1	200	109.2	100	1.4	8.4	≅4.1	15-25
80	1	200	124.8	100	1.6	9.6	≅5.0	20-30
90	1	200	140.4	100	1.8	10.8	≅6.0	25-35
100	1	200	156	100	2.0	12.0	≅7.5	30-45

### Induction heating system compositions

1. Induction heating power
2. Induction coil
3. K thermalcouple
4. Temperature recorder
5. Insulation blanket
6. Extend cable for coil
7. Thermalcouple extend cable
8. Chiller for coil or heater

### Contact:

Ms. Kacy Meng (86-13465321069)  
Qingdao Shuimu Induction Equipment Co.,Ltd  
Add: No.57 Xiangtan,Qingdao,CN  
Tel: 86-532-89980348  
E-mail: [sales@cmheat.com](mailto:sales@cmheat.com)  
[Http://www.weld-heat.com](http://www.weld-heat.com) <http://cmheat.en.alibaba.com>



WeChat to Learn More heaters and applications



WeChat to Contact the Service personal



Qingdao Shuimu Induction Equipment Co.,Ltd Add: C-1805,Suning Plaza,Licang,Qingdao,China Tel: 86-532-89980348;  
E-mail: [sales@cmheat.com](mailto:sales@cmheat.com) Web: [Http://www.cmheat.com](http://www.cmheat.com); <http://cmheat.en.alibaba.com/> Fax: 86-532-84623448

## Packing & shipping: wood box





Qingdao Shuimu Induction Equipment Co.,Ltd Add: C-1805,Suning Plaza,Licang,Qingdao,China Tel: 86-532-89980348;  
E-mail: [sales@cmheat.com](mailto:sales@cmheat.com) Web: [Http://www.cmheat.com](http://www.cmheat.com); <http://cmheat.en.alibaba.com/> Fax: 86-532-84623448



